

**COUNTER TOP MOUNT  
EYE / FACEWASH STATIONS****PRODUCTION DESCRIPTION**

Emergency Eye/Facewash Stations with or without SAF-T-LOK<sup>®</sup> feature. Designed for counter top installation in areas where people may come into contact with hazardous materials.

**GENERAL INFORMATION**

Following are requirements of ANSI Z358.1 for Emergency Eyewash and Shower Equipment. A complete copy of this standard may be purchased from the International Safety Equipment Association.

1. Units shall be installed in accordance with the manufacturer's instructions and acceptable plumbing practices.
2. The unit shall be positioned with the water nozzles between 83.8 cm (33 inches) and 114.3 cm (45 inches) from the floor and 15.3 cm (6 inches) minimum from the wall or nearest obstruction.
3. The unit shall be connected to a system capable of supply adequate flushing fluid to meet the flow requirements of each unit operating simultaneously. The supply line shall provide an uninterrupted supply of potable water at recommended minimum 0.207 megapascal (30 pounds per square inch) of flow pressure.
4. Where the possibility of freezing conditions exists, equipment shall be protected from freezing or freeze-protected equipment shall be installed.
5. When the unit is installed, the valve shall be operated to determine that both eyes can be irrigated simultaneously at a velocity low enough not to be injurious to the user.
6. Eyewash units shall be accessible locations that require no more than 10 seconds travel time from the farthest hazard.
7. Each unit location shall be identified with a highly visible sign. The area around the unit shall be well lit.
8. Plumbed units shall be inspected annually for proper operation to ensure compliance to ANSI Z358.1 standard.

**OPERATION & MAINTENANCE**

1. Plumbed units shall be activated weekly to flush lines and verify proper flow pattern and volume.
2. Test records should be maintained verifying compliance with testing procedures.
3. Some chemical vapors or liquids may damage or soften plastic materials. Precaution should be taken to determine compatibility prior to installation.

**TRAINING**

All employees who might be exposed to hazardous material shall be instructed in the location and proper use of emergency shower and eye/facewash units. Experiences have shown that initial first-aid treatment for irritants should be to wash the eyes and face for 15 minutes prior to medical treatment. It is important to hold the eyelids open and roll the eyes so water will flow on all surfaces and in the folds surrounding the eyes.

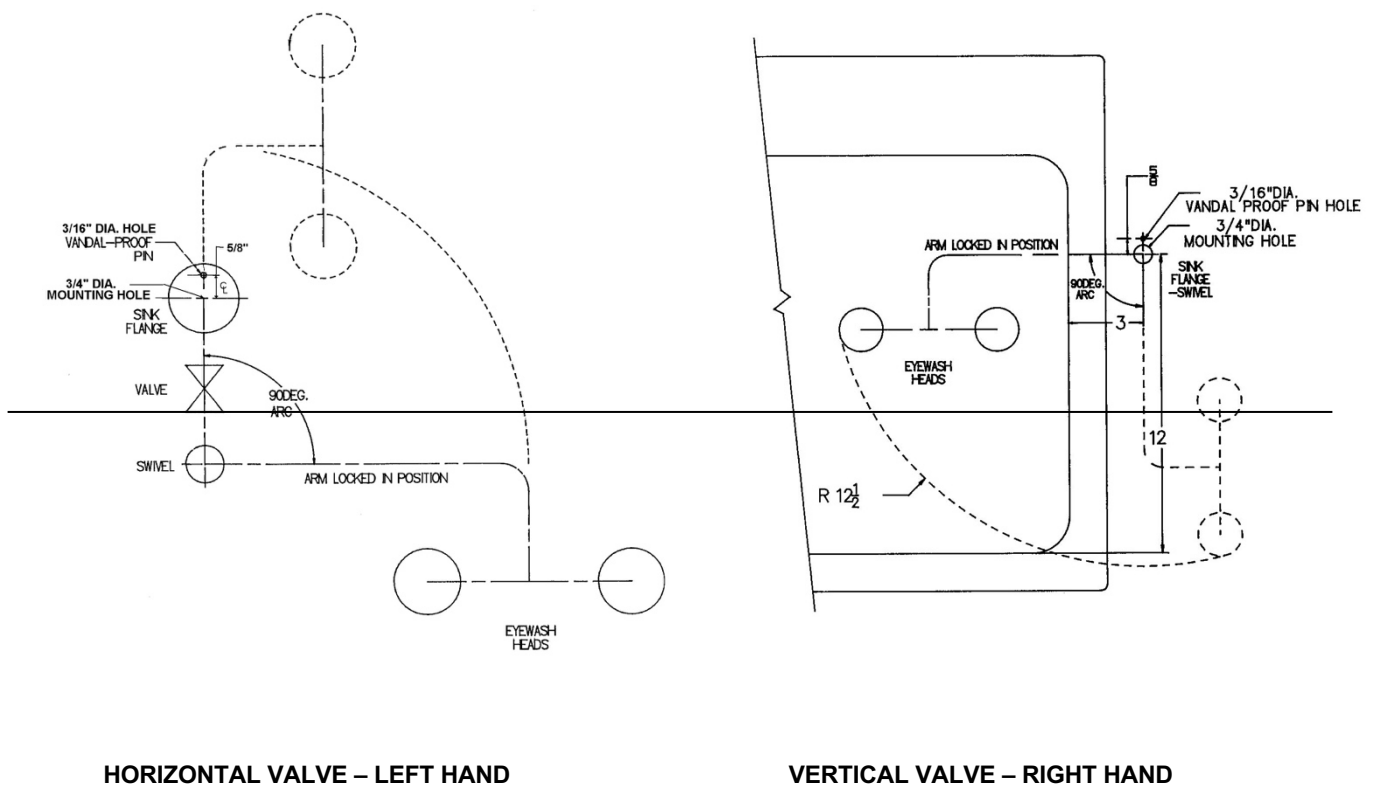
**SPARE PARTS LIST**

P/N 01052157	Dual Stream Facewash Assembly	P/N 01052156	Dual Stream Eyewash Assembly
P/N 01052040	ABS Eye/Facewash Head, 4 GPM	P/N 01052045	Acetal Eyewash Head, 1.2 GPM
P/N 01052020	Eye/Facewash Float Off Cover	P/N 00011066	Brass Chrome Plated Ball Valve, 3/8"

## INSTALLATION INSTRUCTIONS

1. **PRIOR TO DRILLING**, ensure counter space area is sufficient to allow full swiveling movement as per the unit design.
2. Installation of a shut off valve (by others) upstream of the eyewash on the water supply line is recommended for future maintenance requirements.
3. Mark counter top near sink for proposed valve location. See recommended installation layout diagrams of left and right hand versions (**Figure 1**).
4. Hole locations are measured from the front inside right (mirror image for left-hand units) edge of sink basin.
5. Drilling requirements: Supply Connections – 3/8" NPT requires 3/4" hole through counter.  
Vandal Proof Pin (prevents twisting of station at base) – requires 3/16" hole into counter.  
Locate vandal pin hole 5/8" off centerline at back of the supply 3/4" hole.
6. From topside of counter, insert nipple through 3/4" hole and insert vandal proof pin through 3/16" hole.
7. Secure washer and flange nut to nipple from underside of counter using pipe wrench and appropriate pipe sealant prior to connection of water supply. When tightening nut and plumbing below be sure to hold pipe wrench on the valve base just above threads to prevent turning. Failure to do so may damage vandal pin or valve, voiding warranty. **NOTE: Pipe sealant tape should not be used.**
8. Piping supply requirements: minimum dynamic pressure (flowing) - 45 PSIG; minimum supply piping - 3/8".
9. Attach water supply to 3/8" NPT water inlet connection.
10. For proper operation of hinged lids, position the hinges to the inside of the eyewash.
11. Install wall signage nearby in a prominent location.
12. Flush waterline and test unit for leaks and for proper water flow pattern by activating valve to open position using push plate.

**FIGURE 1 – INSTALLATION LAYOUTS**



## PROPOSITION 65

WARNING: This product can expose you to BPA, which is known to the State of California to cause birth defects or other reproductive harm. For more information go to [www.P65Warnings.ca.gov](http://www.P65Warnings.ca.gov).

## WARRANTY STATEMENT

ENCON HEREBY DISCLAIMS ALL WARRANTIES EXPRESSED OR IMPLIED INCLUDING BUT NOT LIMITED TO WARRANTIES OF MERCHANTABILITY, FITNESS FOR A PARTICULAR PURPOSE, AND NON-INFRINGEMENT OF THIRD-PARTY RIGHTS, EXCEPT AS HEREINAFTER PROVIDED.

Encon Safety Products warrants that for one year from the date of purchase of any Encon products, the product will be free of defects in materials and workmanship if properly used and cared for or cleaned under normal conditions in accordance with Encon's use and care instructions and properly installed, if applicable, in accordance with Encon's installation instructions. With respect to the product, Encon's only obligation and purchaser's exclusive remedy under this warranty is to repair or replace such product; provided that:

1. Encon is notified of the defect within one year of shipment, and
2. the product is determined by Encon to be defective.

Encon requires proof of original ownership as proof of warranty coverage, and Encon must receive any claim under this Limited Warranty within one year of purchase of the product.

NOTWITHSTANDING ANYTHING TO THE CONTRARY CONTAINED HEREIN, ENCON SHALL NOT BE LIABLE FOR LOSS, DAMAGE, OR EXPENSE ARISING DIRECTLY OR INDIRECTLY AS A CONSEQUENCE OF USE OF THE EQUIPMENT WITH OTHER PRODUCTS OR FROM ANY OTHER CAUSE, INCLUDING ANY CONSEQUENTIAL, INCIDENTAL, SPECIAL OR EXEMPLARY DAMAGES, EXCEPT FOR ENCON'S OBLIGATION TO REPAIR OR REPLACE DEFECTIVE PRODUCTS AS EXPRESSLY PROVIDED IN THIS STATEMENT.

Replacement parts purchased from Encon are warranted for one year following the shipment of such replacement part, or until the expiration of the warranty period for the product, whichever is less. No warranty is given in connection with products that are altered without Encon's expressed written consent. The same warranty limitations and the obligations of Encon as set out herein above shall apply to replacement parts.

Encon's total liability arising out of this warranty (including, but not limited to, warranty claims) regardless of forum and regardless of whether such action or claim is based on tort, contract or otherwise will not exceed the total purchase price of the product.



6825 W. Sam Houston Pkwy. N  
Houston, TX 77041  
1-800-AT-ENCON / 1-800-283-6266  
[customerservice@enconsafety.com](mailto:customerservice@enconsafety.com)  
<http://www.enconsafety.com>