

## PRODUCT DESCRIPTION

The pull-down emergency eyewash is designed as a barrier free station for installation in areas where people may come into contact with hazardous materials. Several eyewash models available to meet various installation site requirements include recessed wall mount cabinet station (with or without spent return drain systems) and surface wall mount station (with or without stainless steel wall plate).



## GENERAL INFORMATION

Following are requirements of ANSI Z358.1 for Emergency Eyewash and Shower Equipment. A complete copy of this standard may be purchased from the International Safety Equipment Association.

- 1) Unit shall be installed in accordance with the manufacturer's instructions and acceptable plumbing practices.
- 2) The eye/facewash shall be positioned with the water nozzles between 83.8 cm (33 inches) and 114.3 cm (45 inches) from the floor and 15.3 cm (6 inches) minimum from the wall or nearest obstruction.
- 3) The unit shall be connected to a system capable of supplying adequate flushing fluid to meet the flow requirements of each component operating simultaneously. The supply line shall provide an uninterrupted supply of potable water at recommended minimum 0.207 megapascal (30 pounds per square inch) of flow pressure.
- 4) Where the possibility of freezing conditions exists, equipment shall be protected from freezing or freeze-protected equipment shall be installed.
- 5) When the unit is installed, it shall be tested in accordance with the following procedures:
  - a) With the unit correctly connected to the water source and the valve(s) closed, visually check the piping connection for leaks.
  - b) Open the valve to the full open position. The valve shall remain open without requiring further use of the operator's hands.
  - c) With the valve in the "full on" position, measure the flushing fluid flow pattern with the use of a test gauge to determine a suitable eyewash pattern as required by ANSI standards. Determine that both eyes can be irrigated simultaneously at a velocity low enough not to be injurious to the user.
- 6) Eyewash units shall be in accessible locations that require no more than 10 seconds travel time from the farthest hazard.  
NOTE: Test that all devices on combination units are capable of operating simultaneously to ANSI standard.
- 7) Each unit location shall be identified with a highly visible sign. The area around the unit shall be well lit.
- 8) Plumbed units shall be inspected annually for proper operation to ensure compliance to ANSI Z358.1 standard.

## OPERATION & MAINTENANCE

1. Plumbed units shall be activated weekly to flush lines and verify proper flow pattern and volume.
2. Test records should be maintained verifying compliance with testing procedures.
3. Some chemical vapors or liquids may damage or soften plastic materials. Precaution should be taken to determine compatibility prior to installation.

## TRAINING

All employees who might be exposed to hazardous material shall be instructed in the location and proper use of emergency shower and eye/facewash units. Experiences have shown that initial first-aid treatment for irritates should be to wash the eyes and face for 15 minutes prior to medical treatment. It is important to hold the eyelids open and roll the eyes so water will flow on all surfaces and in the folds surrounding the eyes.

# ASSEMBLY AND INSTALLATION INSTRUCTIONS

## **CAUTION:**

1. Adequate support of water supply line and adequate wall support or stud are essential.
2. Suitable anchorage is required.
3. Use of a power tool or an air tool is not recommended.

## **Attachment To Wall:** (when applicable)

Mounting fasteners are not included.

**Stud:** Fasten wood to existing studs. Use a minimum of ten (10) ¼" dia. lag screws to mount recessed cabinet or backing plate. Screws should be long enough to ensure adequate anchorage into the stud supports.

**Concrete Block:** Use a minimum of ten (10) ¼" dia. toggle screws.

**Concrete:** Use a minimum of ten (10) ¼" dia. expansion anchors or equal

## **NOTES:**

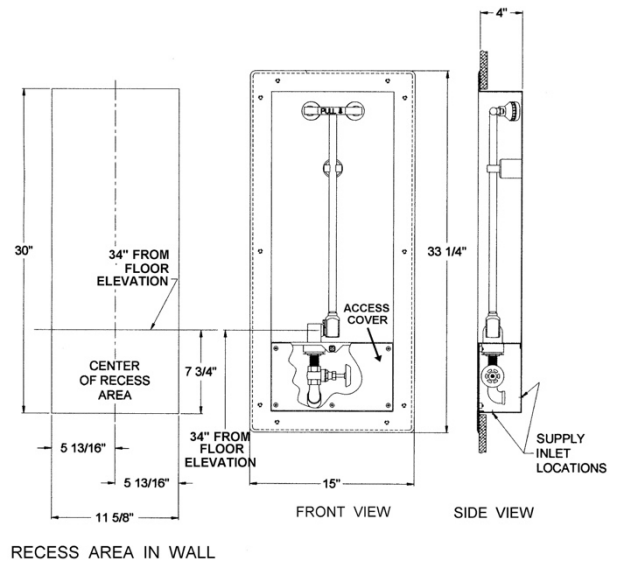
- 1) Mounting fasteners are not included. Must be supplied by others.
- 2) Identify desired target area for eyewash station.
- 3) Before mounting eyewash cabinet, install supply water piping. Location for the installation of customer supplied plumbing for ½" FNPT inlet and 1½" spent water lines (supplied by others) is 4½" from the right side of the wall opening and extend 4¾" beyond the wall opening. For reference, see **Figure 1**.
- 4) See Figure 1 below for wall opening requirements for recessed cabinet models. There should be at least 4" clearance beyond opening to accommodate cabinet mounting flange. See Figures 3 and 4 for surface wall clearance requirements for surface wall mount models
- 5) It is recommended to frame the opening so that the recessed cabinet has a sturdy structure for surface mount support.
- 6) An area 48" wide by 30" out from wall must be kept clear for wheelchair accessibility.

## **Recessed Wall Mount Cabinet Models:**

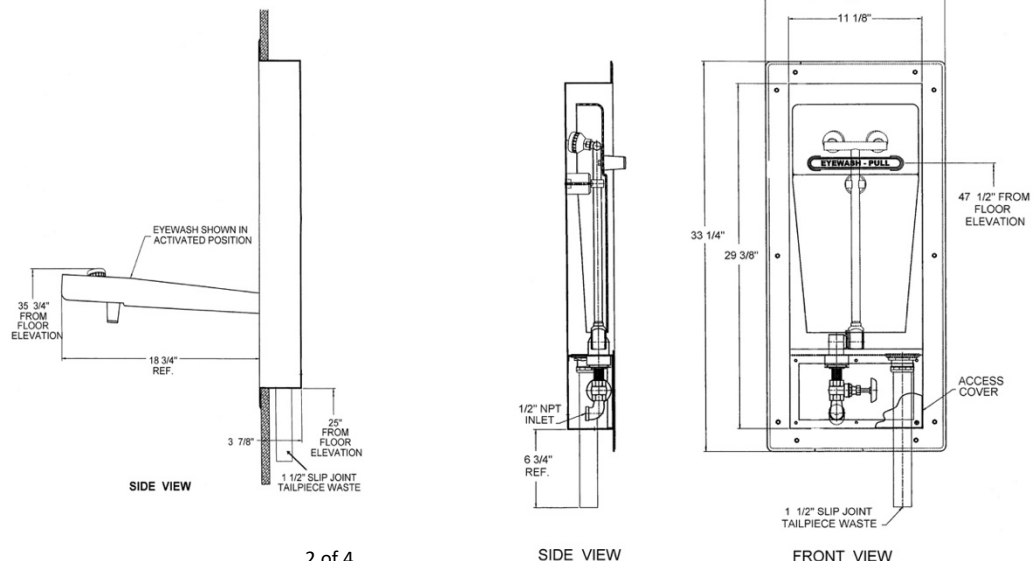
Locate the desired target, measure 34" from floor elevation and mark that location on wall.

1. From the marked location, measure down 7¾" and mark that location. From that point, measure up 30" and mark that location.
2. Mark 11 5/8" across for the width of the recess area.
3. The recessed cabinet is packaged fully assembled. Prior to wall installation, remove the 3/16 x 10-32 screws from the front access cover using a Phillips screwdriver. **CAUTION: DO NOT USE A POWER TOOL OR AN AIR TOOL.** Place the access cover and screws to one side.
4. Remove the appropriate half of the lower union and attach the union fitting to ½" NPT inlet potable water supply line connection using pipe wrench and appropriate pipe sealant. The ½" FNPT inlet supply connection and gate valve can be accessed from the back or bottom of the unit.
5. Open gate valve to achieve flow.
6. Insert recessed cabinet into wall opening, with the 1½" slip joint tailpiece introduced first. **NOTE:** Applicable on units designed with a tailpiece for waste connection.
7. Reconnect lower union to union fitting. Use appropriate pipe sealant. **DO NOT TIGHTEN UNION AT THIS TIME.**

**FIGURE 1**



**FIGURE 2**

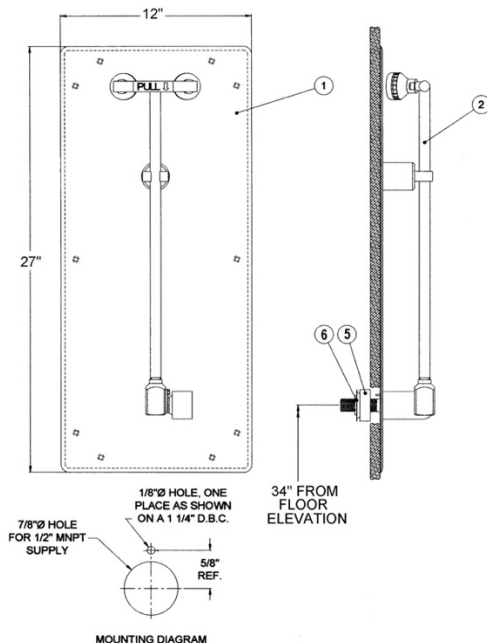


## ASSEMBLY AND INSTALLATION INSTRUCTIONS - continued

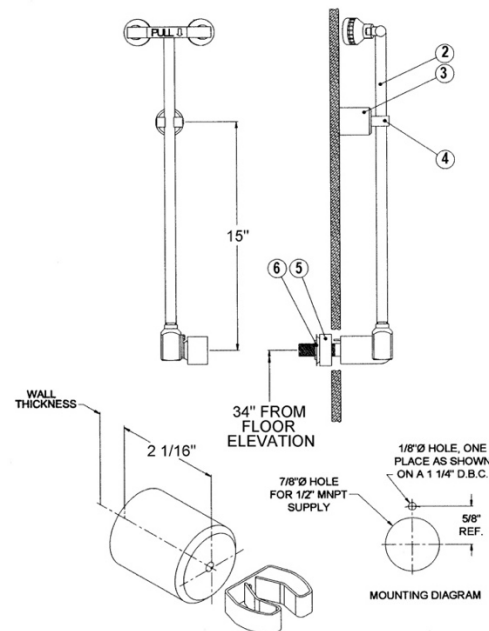
8. Attach wastewater plumbing (supplied by others) to the 1½" slip joint tailpiece for spent fluid drainage, if applicable.
  9. Ensure recessed cabinet is level. Secure cabinet mounting flange to wall using appropriate mounting fasteners (supplied by others).
  10. **TIGHTEN ALL UNIONS AT THIS TIME USING PIPE WRENCH. NOTE:** Do not replace front access cover at this time.
  11. Prior to replacing access cover, test eyewash station for leaks and proper water flow pattern by activating eyewash valve. To activate, pull down eyewash arm or handle to 90° open position. Activation graphics are shown.
  12. Recommended maximum dynamic water pressure 80 psi, minimum dynamic water pressure 30 psi.
  13. After inspection is complete and satisfactory, return eyewash assembly to the spring clip holder.
  14. Replace the access cover and screws using a Phillips screwdriver.
- CAUTION: DO NOT USE A POWER TOOL OR AN AIR TOOL.**

### Flush to Wall Mount (with stainless steel wall plate) and Pipe Mount Models:

1. Before mounting eyewash cabinet, install supply water piping, as indicated on **Figure 2** on page 3.
2. Locate the desired target, measure 34" from floor elevation and mark that location on wall.
3. Drill a 7/8" diameter hole in the wall to accept the ½" MNPT pipe nipple at the marked location.
4. Drill a 1/8" diameter hole in the wall for the anti-vandal pin located on the eyewash valve. See mounting diagram below for location holes.
5. Backing Plate (#1) installation: (If applicable)
  - a. Position backing plate on wall so that the eyewash mounting holes on backing plate and the wall are in line with each other.
  - b. Attach backing plate to wall using appropriate mounting fasteners (supplied by others).
6. Remove washer and nut (#6) from eyewash inlet pipe nipple.
7. Pass pipe nipple and roll pin through the backing plate (if applicable) and wall.
8. Thread washer and nut (#6) securely to the inlet pipe nipple. If necessary, use the mounting adapter (#5) (included) to securely attach the unit to the wall. See Figure 4 for reference.
9. Connect potable water supply line to the ½" MNPT inlet connection. **CAUTION: Prior to connection, ensure the inlet water supply line is adequately supported.**
10. Spacer and Spring Clip Holder (#3 & #4) installation: (Applicable on models without backing plates.)
  - a. Spacer and spring clip holder must be in line with the vertical pipe of the eyewash assembly when in closed position.
  - b. Eyewash should be in closed position (eyewash heads rotated up and against the wall).
  - c. Measure approximately 15" from the inlet and mark the location on wall.
  - d. Attach spacer and spring clip at the marked location using appropriate hardware (supplied by others). **NOTE:** The hole through the components accommodates a #10-24 diameter screw or bolt. The length of the hardware should be a minimum of 2 1/16" plus the thickness of the wall.
11. Test eyewash station for leaks and proper water flow pattern by activating eyewash valve. To activate, pull down eyewash arm to 90° open position. Activation graphics are shown.
12. Recommended maximum dynamic water pressure 80 psi, minimum dynamic water pressure 30 psi.
13. After inspection is complete and satisfactory, return eyewash assembly to the spring clip holder.



**FIGURE 3**



**FIGURE 4**

## REPLACEMENT PARTS LIST

|               |  |               |  |
|---------------|--|---------------|--|
| P/N 01040132* | 3/8" Ball Valve, eyewash   | P/N 01055007  | Stainless Steel 30 GPM Shower Head   |
| P/N 01040137  | 3/8" Ball Valve, eyewash   | P/N 01055008  | Stainless Steel 30 GPM Shower Head<br>w/Trim Ring, for flush ceiling mount<br>models |
| P/N 01052102  | 1" Ball Valve Kit, shower  | P/N 01112793* | Decal, Eyewash Activation Graphic  |
| P/N 01052045  | Acetal Eyewash Head with Cap   | P/N 01112842  | Decal, Eyewash Activation Graphic  |
| P/N 01055005  | Stainless Steel 20 GPM Shower Head   | P/N 01113007  | Decal, Shower Activation Graphic   |
| P/N 01055006  | Stainless Steel 20 GPM Shower Head<br>w/Trim Ring, for flush ceiling mount<br>models |               |  |

\*NOTE: For Models 01112428, 01112429, 01112476, 01112477, 01112480, 01112481

## PROPOSITION 65

WARNING: This product can expose you to BPA, which is known to the State of California to cause birth defects or other reproductive harm. For more information go to [www.P65Warnings.ca.gov](http://www.P65Warnings.ca.gov).

## WARRANTY STATEMENT

ENCON HEREBY DISCLAIMS ALL WARRANTIES EXPRESSED OR IMPLIED INCLUDING BUT NOT LIMITED TO WARRANTIES OF MERCHANTABILITY, FITNESS FOR A PARTICULAR PURPOSE, AND NON-INFRINGEMENT OF THIRD-PARTY RIGHTS, EXCEPT AS HEREINAFTER PROVIDED.

Encon Safety Products warrants that for one year from the date of purchase of any Encon products, the product will be free of defects in materials and workmanship if properly used and cared for or cleaned under normal conditions in accordance with Encon's use and care instructions and properly installed, if applicable, in accordance with Encon's installation instructions. With respect to the product, Encon's only obligation and purchaser's exclusive remedy under this warranty is to repair or replace such product; provided that:

1. Encon is notified of the defect within one year of shipment, and
2. the product is determined by Encon to be defective.

Encon requires proof of original ownership as proof of warranty coverage, and Encon must receive any claim under this Limited Warranty within one year of purchase of the product.

NOTWITHSTANDING ANYTHING TO THE CONTRARY CONTAINED HEREIN, ENCON SHALL NOT BE LIABLE FOR LOSS, DAMAGE, OR EXPENSE ARISING DIRECTLY OR INDIRECTLY AS A CONSEQUENCE OF USE OF THE EQUIPMENT WITH OTHER PRODUCTS OR FROM ANY OTHER CAUSE, INCLUDING ANY CONSEQUENTIAL, INCIDENTAL, SPECIAL OR EXEMPLARY DAMAGES, EXCEPT FOR ENCON'S OBLIGATION TO REPAIR OR REPLACE DEFECTIVE PRODUCTS AS EXPRESSLY PROVIDED IN THIS STATEMENT.

Replacement parts purchased from Encon are warranted for one year following the shipment of such replacement part, or until the expiration of the warranty period for the product, whichever is less. No warranty is given in connection with products that are altered without Encon's expressed written consent. The same warranty limitations and the obligations of Encon as set out herein above shall apply to replacement parts.

Encon's total liability arising out of this warranty (including, but not limited to, warranty claims) regardless of forum and regardless of whether such action or claim is based on tort, contract or otherwise will not exceed the total purchase price of the product.



6825 W. Sam Houston Pkwy. N  
Houston, TX 77041  
1-800-AT-ENCON / 1-800-283-6266  
[customerservice@enconsafety.com](mailto:customerservice@enconsafety.com)  
<http://www.enconsafety.com>