

PRODUCT DESCRIPTION

Skid mounted and walk through emergency stall shower stations with single shower head or multi nozzles for full body spray coverage designed for installation in areas where people may come into contact with hazardous materials.

GENERAL INFORMATION

Following are requirements of ANSI Z358.1 for Emergency Eyewash and Shower Equipment. A complete copy of this standard may be purchased from the International Safety Equipment Association.

1. The unit shall be connected to a system capable of supplying adequate flushing fluid to meet the flow requirements of each component. The supply line shall provide an uninterrupted supply of potable water at recommended minimum 0.207 megapascal (30 pounds per square inch) of flow pressure. Where the possibility of freezing conditions exists, equipment shall be protected from freezing or freeze-protected equipment shall be installed.
2. Units shall be installed in accordance with the manufacturer's instructions and acceptable plumbing practices.
3. The unit shall be positioned to where the facewash heads 83.8 cm (33 inches) to 114.3 cm (45 inches) from the floor and 15.3 cm (6 inches) minimum from the wall or nearest obstruction.
4. After installation, the shower unit shall be tested in accordance with the following procedures:

NOTE: Test that all devices on combination units are capable of operating simultaneously to ANSI standard.

- a. With the unit correctly connected to the water source and the valve(s) closed, visually check the piping connection for leaks.
 - b. Open the valve to the full open position. The valve shall remain open without requiring further use of the operator's hands.
 - c. Measure the shower. The face of the shower head shall be not less than 208.3 cm (82 inches) nor more than 243.8 cm (96 inches) from the surface on which the user stands.
 - d. With the valve in the "full on" position, measure the diameter of the spray pattern. It shall be a minimum of 50.8 cm (20 inches) at 152.4 cm (60 inches) above standing level. The center of the spray shall be at least 40.6 cm (16 inches) from any obstruction.
5. When the unit is installed, the valve shall be operated to determine that both eyes can be irrigated simultaneously at a velocity low enough not to be injurious to the user.
 6. Units shall be in accessible locations that require no more than 10 seconds travel time from the farthest hazard.
 7. Each unit location shall be identified with a highly visible sign. The area around the unit shall be well lit.
 8. Plumbed units shall be inspected annually for proper operation to ensure compliance to ANSI Z358.1 standard.



WALK-THROUGH SHOWER STATION SHOWN

OPERATION & MAINTENANCE

1. Plumbed units shall be activated weekly to flush lines and verify proper flow pattern and volume.
2. Test records should be maintained verifying compliance with testing procedures.
3. Some chemical vapors or liquids may damage or soften plastic materials. Precaution should be taken to determine compatibility prior to installation.

TRAINING

All employees who might be exposed to chemical splash shall be instructed in the location and proper use of emergency shower and eye/facewash units. Medical and industrial experiences have shown that initial first-aid treatment for chemical should be to wash the eyes and face for 15 minutes prior to medical treatment. It is important to hold the eyelids open and roll the eyes so water will flow on all surfaces and in the folds surrounding the eye.

ASSEMBLY AND INSTALLATION INSTRUCTIONS

WALK-THROUGH STALL SHOWER

Attachment to Floor

CAUTION: CHECK FOR ADEQUATE FLOOR STRENGTH.

NOTES:

1. **Mounting hardware is not included.**
2. **Bolts (supplied by others) should be long enough to allow at least a 1/2" bolt clearance for nut attachment.**
3. **Suggest that at least two (2) installers participate.**

Concrete: Secure the floor flanges (stainless steel/galvanized) using sixteen (16) expansion anchors or equal type anchors.

NOTE: If a concrete base is required ensure raised area is no more than 2" from standing level.

Metal: Secure floor flanges using sixteen (16) 1/4"-13 UNC x 2" machine bolts for **thick metal surface** (drill and tap thick metal surface) or sixteen (16) 1/4"-13 UNC bolts and nuts for **thin metal surface**.

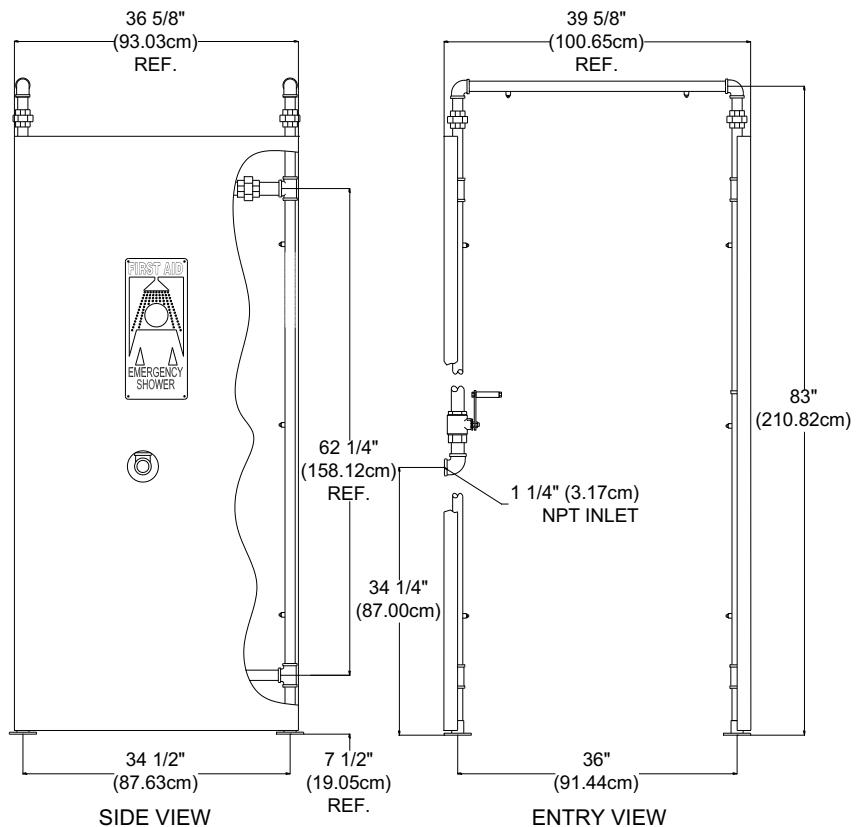
Wood: Secure floor flange using sixteen (16) 1/4"x 3" lag screws.

NOTE: Use pipe sealant on all joints except on ABS component eyewash or facewash heads.

1. Lay panels, pipe side down, in area where stall shower is to be installed.
2. Locate overhead pipe assemblies. Attach female union on overhead section to male union on top end of panel making sure spray nozzles on overhead unit are facing inward. Use pipe wrench to tighten union connections.
CAUTION: DO NOT OVERTIGHTEN.
3. Repeat for each corner.
4. Raise unit to upright position and rest on floor flanges.
5. Position stall in desired location ensuring the 1-1/4" NPT water inlet is in line with the water supply pipe.
6. Connect water supply to the 1-1/4" NPT water inlet of the stall unit using pipe wrench and pipe sealant. **DO NOT OVERTIGHTEN.**
7. Secure stall shower to floor using appropriate hardware (see above).
8. Check for leaks and proper water flow upon testing of shower. (Max. dynamic water pressure 80 psi/Min. dynamic water pressure 30 psi).

If eyewash/facewash sub-assembly is used:

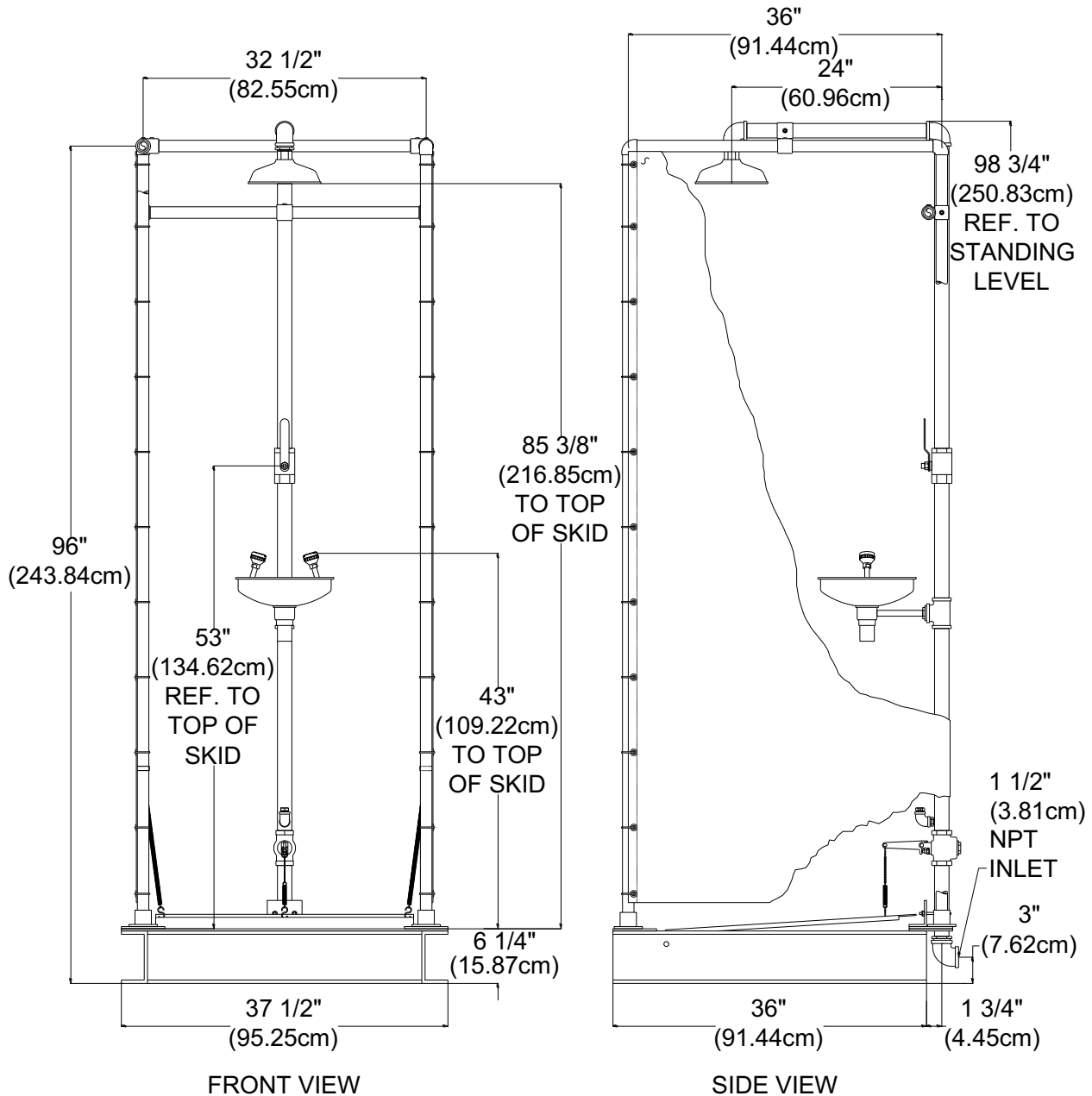
1. Attach eyewash fountain sub-assembly to stall when applicable. Tighten unions using pipe wrench and taking care to avoid cross threading.
2. Assemble eye/facewash head onto the fountain section, taking care to avoid cross threading. Hand tighten until snug and eyewash heads are positioned perpendicular to the eyewash ball valve.
CAUTION: DO NOT OVER TIGHTEN. DO NOT USE PIPE SEALANT.
3. Attach push plate to eyewash ball valve and secure with lock nut provided.



ASSEMBLY AND INSTALLATION INSTRUCTIONS - continued

SKID MOUNTED STALL SHOWER

1. Skid mounted stall shower stations are pre-assembled at factory ready for customer installation.
2. Position stall in desired location ensuring the 1-1/2" NPT water inlet is in line with the water supply pipe and shower skid is level.
3. Connect water supply to the 1-1/4" NPT water inlet of the stall unit using pipe wrench and pipe sealant. **DO NOT OVERTIGHTEN.**
4. Locate drain (side or bottom). Measure drain size (approx. 3" or 4"). Connect drain to drain pipe using pipe wrench and pipe sealant. **CAUTION: DO NOT OVERTIGHTEN.**
5. Install shower head to overhead shower piping, taking case to avoid cross threading. Hand tighten until snug. **CAUTION: DO NOT OVERTIGHTEN. DO NOT USE PIPE SEALANT.**
6. Attach eye/facewash head assembly to fountain section, taking care to avoid cross threading. Hand tighten until snug and eyewash heads are positioned perpendicular to shower activation handle. **CAUTION: DO NOT OVERTIGHTEN. DO NOT USE PIPE SEALANT.**
7. Secure stall shower to floor using appropriate hardware, if desired (mounting hardware are not included).
8. Check for leaks and proper water flow pattern upon testing of shower. (max. dynamic water pressure 80 psi / min. dynamic water pressure 30 psi)



SPARE PARTS LIST

P/N	Description	Walk-Thru	Skid/Single Treadle	Skid/Double Treadle
00011001	1¼" Bronze Chrome Plated Ball Valve	✓		
01052101	½" Bronze Chrome Plated Ball Valve Kit	✓		
00011701	Brass Spray Nozzle	✓		✓
01052122	ABS Eye/Facewash Head Assy. w/ABS Wye (use w/yellow bowl fountains)	✓		
01052130	ABS Eye/Facewash Head Assy. w/Brass Chrome Plated Wye (use w/SST bowl fountains)	✓		
01052129	Acetal Eyewash Head Assy. w/Brass Chrome Plated Wye (use w/SST bowl fountains)	✓		
01054003	ABS Shower Head, 30 gpm		✓	✓
00011011	½" Brass Gate Valve			✓
00011048	1¼" Brass Gate Valve			✓
00011017	½" Brass Self-Closing Ball Valve w/Pull Lever			✓
00011018	1¼" Brass Self-Closing Ball Valve w/Pull Lever		✓	✓
01052096	1¼" SST Self-Closing Ball Valve		✓	

PROPOSITION 65

WARNING: This product can expose you to BPA, which is known to the State of California to cause birth defects or other reproductive harm. For more information go to www.P65Warnings.ca.gov.

WARRANTY STATEMENT

ENCON HEREBY DISCLAIMS ALL WARRANTIES EXPRESSED OR IMPLIED INCLUDING BUT NOT LIMITED TO WARRANTIES OF MERCHANTABILITY, FITNESS FOR A PARTICULAR PURPOSE, AND NON-INFRINGEMENT OF THIRD-PARTY RIGHTS, EXCEPT AS HEREINAFTER PROVIDED.

Encon Safety Products warrants that for one year from the date of purchase of any Encon products, the product will be free of defects in materials and workmanship if properly used and cared for or cleaned under normal conditions in accordance with Encon's use and care instructions and properly installed, if applicable, in accordance with Encon's installation instructions. With respect to the product, Encon's only obligation and purchaser's exclusive remedy under this warranty is to repair or replace such product; provided that:

1. Encon is notified of the defect within one year of shipment, and
2. the product is determined by Encon to be defective.

Encon requires proof of original ownership as proof of warranty coverage, and Encon must receive any claim under this Limited Warranty within one year of purchase of the product.

NOTWITHSTANDING ANYTHING TO THE CONTRARY CONTAINED HEREIN, ENCON SHALL NOT BE LIABLE FOR LOSS, DAMAGE, OR EXPENSE ARISING DIRECTLY OR INDIRECTLY AS A CONSEQUENCE OF USE OF THE EQUIPMENT WITH OTHER PRODUCTS OR FROM ANY OTHER CAUSE, INCLUDING ANY CONSEQUENTIAL, INCIDENTAL, SPECIAL OR EXEMPLARY DAMAGES, EXCEPT FOR ENCON'S OBLIGATION TO REPAIR OR REPLACE DEFECTIVE PRODUCTS AS EXPRESSLY PROVIDED IN THIS STATEMENT.

Replacement parts purchased from Encon are warranted for one year following the shipment of such replacement part, or until the expiration of the warranty period for the product, whichever is less. No warranty is given in connection with products that are altered without Encon's expressed written consent. The same warranty limitations and the obligations of Encon as set out herein above shall apply to replacement parts.

Encon's total liability arising out of this warranty (including, but not limited to, warranty claims) regardless of forum and regardless of whether such action or claim is based on tort, contract or otherwise will not exceed the total purchase price of the product.



6825 W. Sam Houston Pkwy. N
Houston, TX 77041
1-800-AT-ENCON / 1-800-283-6266
customerservice@enconsafety.com
<http://www.enconsafety.com>