



1-800-283-6266

phone: (713) 466-1449

email: customerservice@enconsafety.com

COMBINATION SHOWER/FACEWASH W/ SS BOWL AND SS BOWL COVER PART NUMBER: 01050234P20SBC

SPECIFICATION:

Third party certified to ANSI Z358.1, the combination shower and eyewash shall deliver 20 gpm (75.7 lpm) @ 30/70 psi (206.8/482.6 kPa) of flowing pressure from the shower head and 8.0 gpm (30.3 lpm) @ 30/70 psi (206.8/482.6 kPa) of flowing pressure from the facewash. Unit shall provide a non-injurious flow of water for 15 minutes or longer. Combination unit shall be supplied with chrome plated (CP) bronze stay open ball valves with CP balls. Valve sizes: shower 1", facewash 1/2". Unit shall include hand operated actuators for eyewash, SS actuator with actuation graphic for the shower, and 1 1/4" supply/waste connection with flanged floor mounting plate for free-standing installation. Shower head shall be supplied with self-adjusting 20 gpm (75.7 lpm) regulator. Facewash heads to be supplied with 4 gpm (15.1 lpm) float regulators to assure a constant and even dual stream flow pattern under 30/70 psi (206.8/482.6 kPa) hydraulic conditions. Shower head to be manufactured of ABS. Shower head must deliver a minimum of 20" (50.8 cm) diameter pattern to the target area 60" (152.4 cm) above standing level. Facewash heads to be manufactured of safety yellow colored ABS mounted on a chrome plated wye in a type 304 SS bowl. Combination units that provide improper flow pattern or contain deteriorating screens/filters are not acceptable. Combination unit shall be Encon Safety Products Model 01050234P20SBC.

MATERIALS OF CONSTRUCTION:

PIPING: Schedule 80 hot dip galvanized steel.

VALVES: Chrome plated bronze stay open ball valves with chrome plated balls, stainless steel valve stems, stainless steel push plate with actuation graphic (facewash) and stainless steel pull rod assembly with actuation graphic (shower).

SHOWER HEAD: ABS.

FACEWASH HEAD: ABS dual stream heads with chrome plated wye assembly.

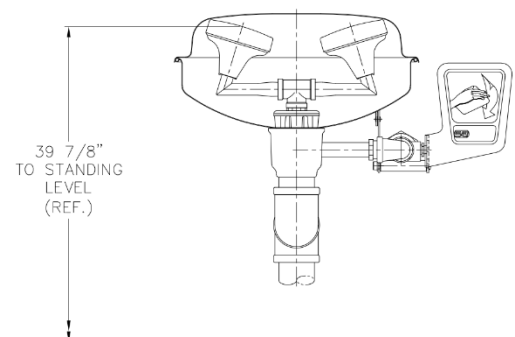
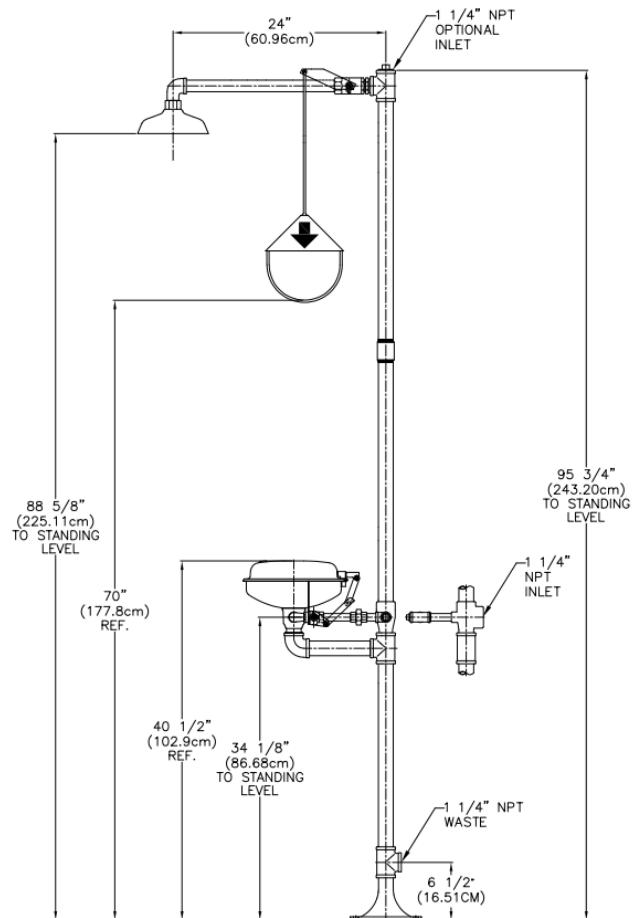
BOWL: Type 304 stainless steel with stainless steel cover.

REGULATOR: Self-adjusting 20 gpm (75.7 lpm) shower and (2) 4.0 gpm (15.1 lpm) facewash float regulators.

SUPPLY: 1 1/4" NPT

WASTE: 1 1/4" NPT

WEIGHT: 41 lbs (18.6 kgs)



FRONT VIEW (FACEWASH)